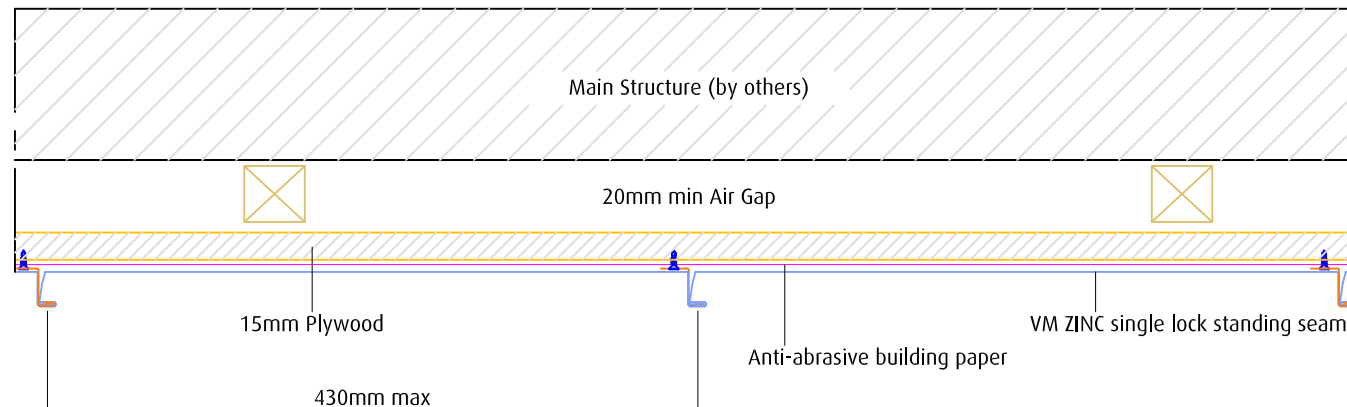




## VM ZINC single lock standing seam



**NOTE: MAIN STRUCTURE  
AND INSULATION  
BY OTHERS**

TITLE

GENERAL CROSS SECTION

System

VM ZINC SINGLE LOCK  
STANDING SEAM

Scale

1:5 @ A4

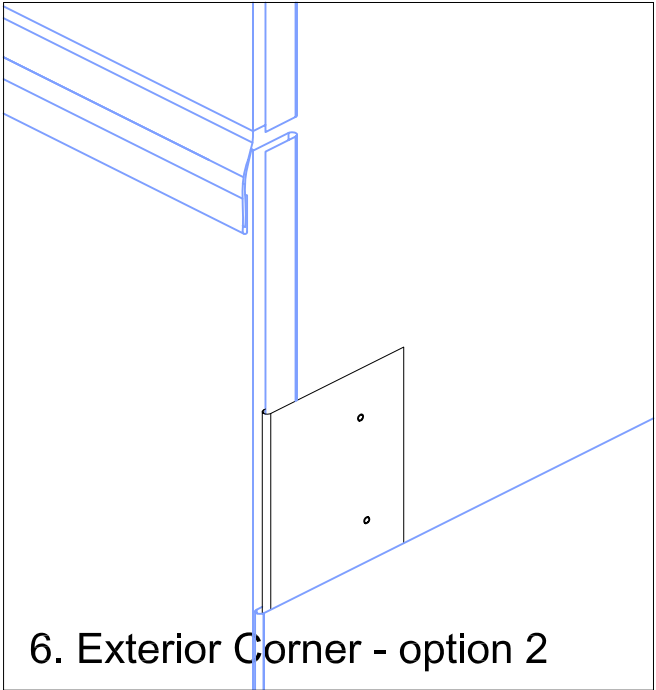
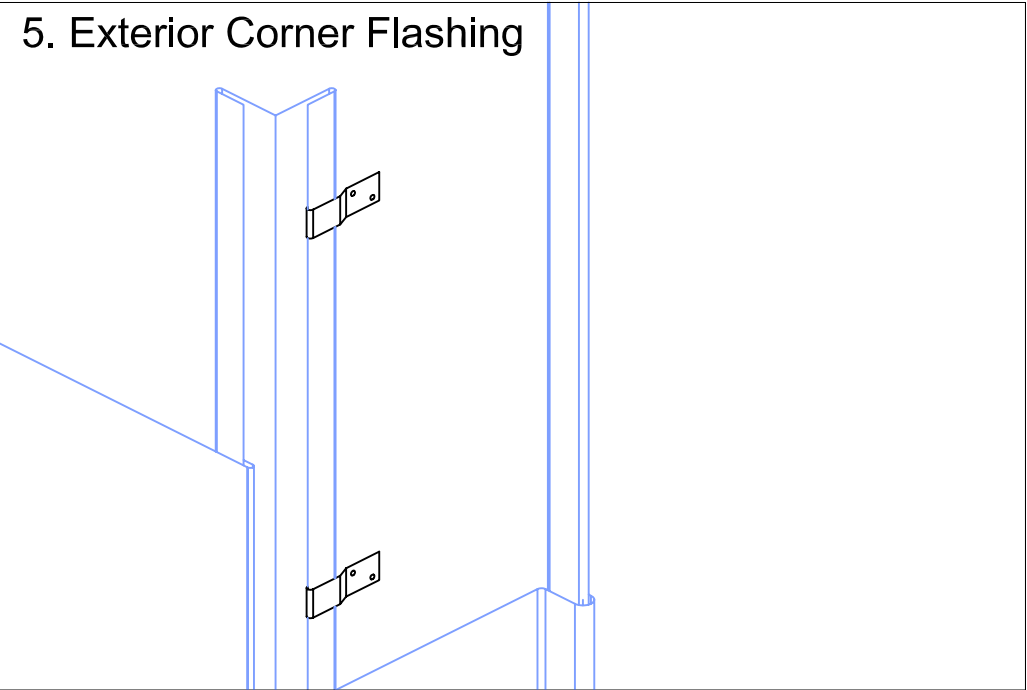
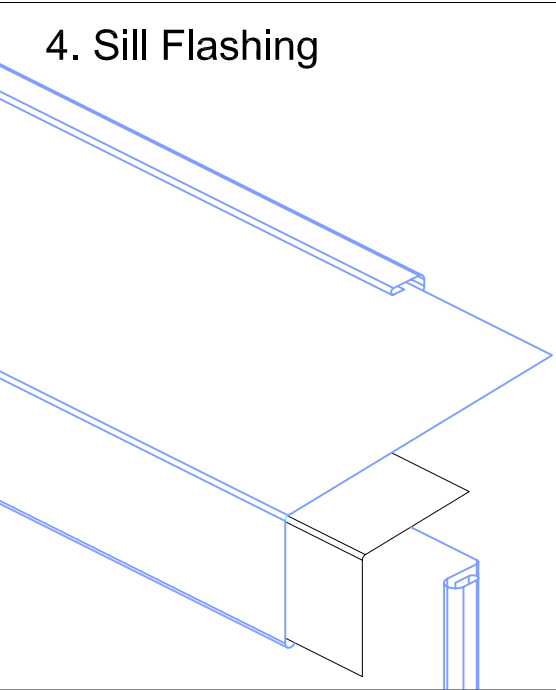
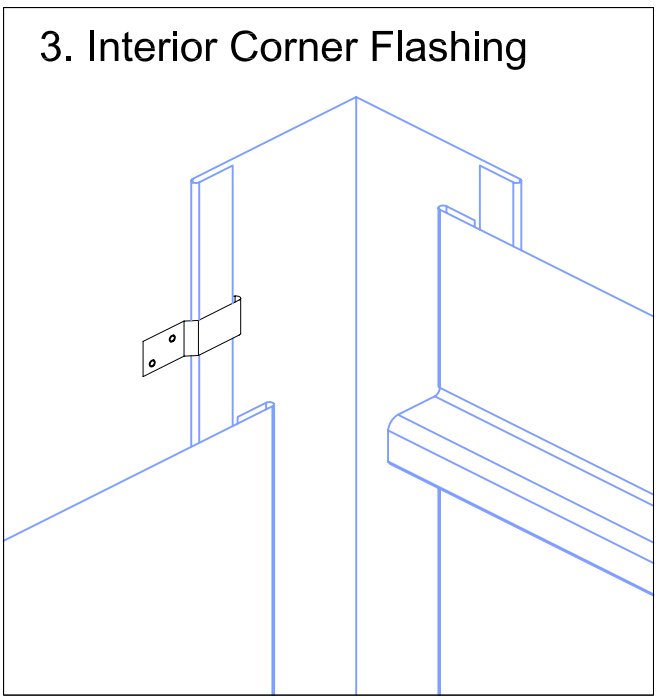
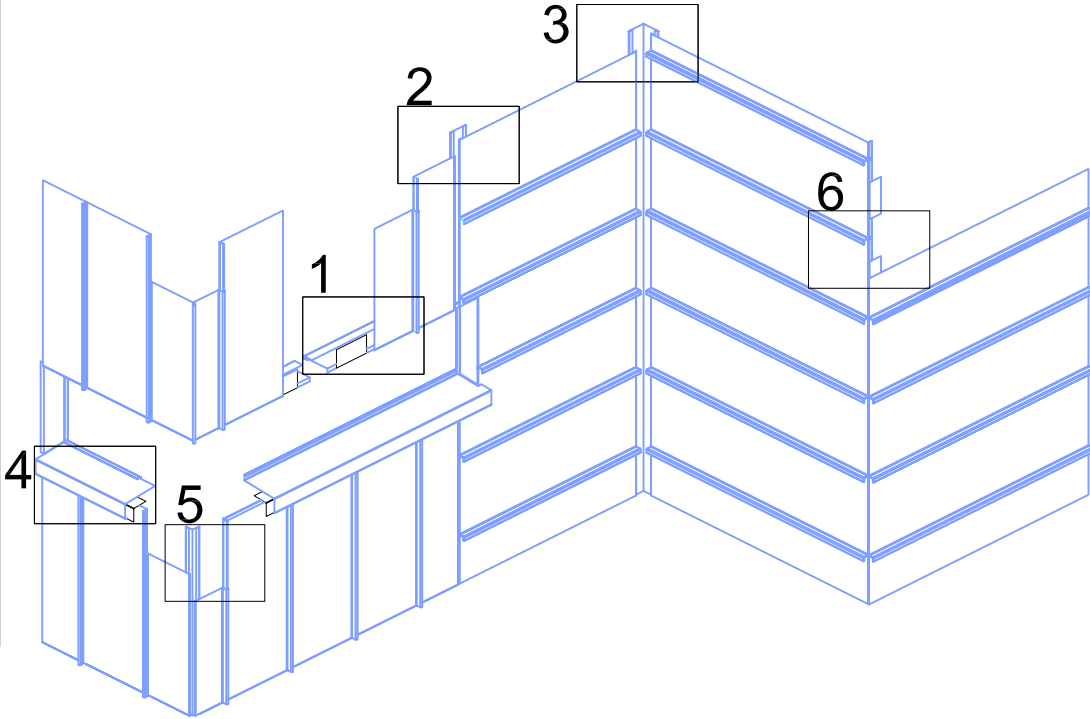
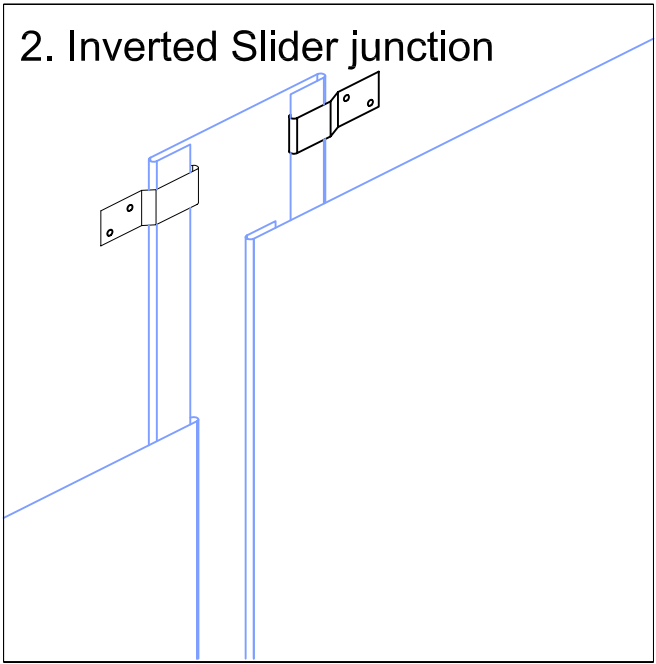
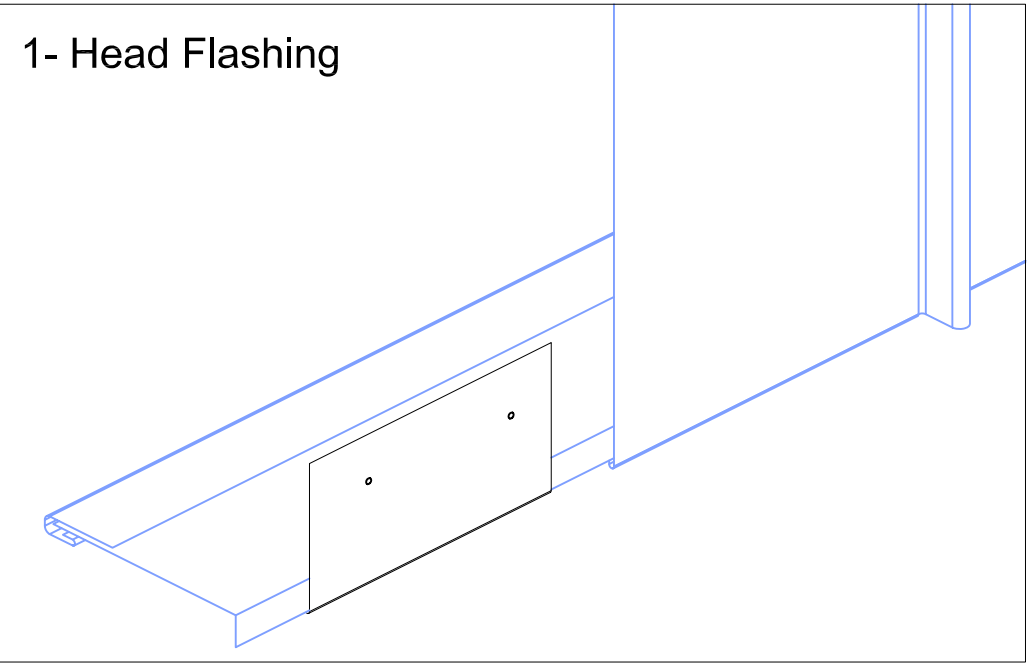
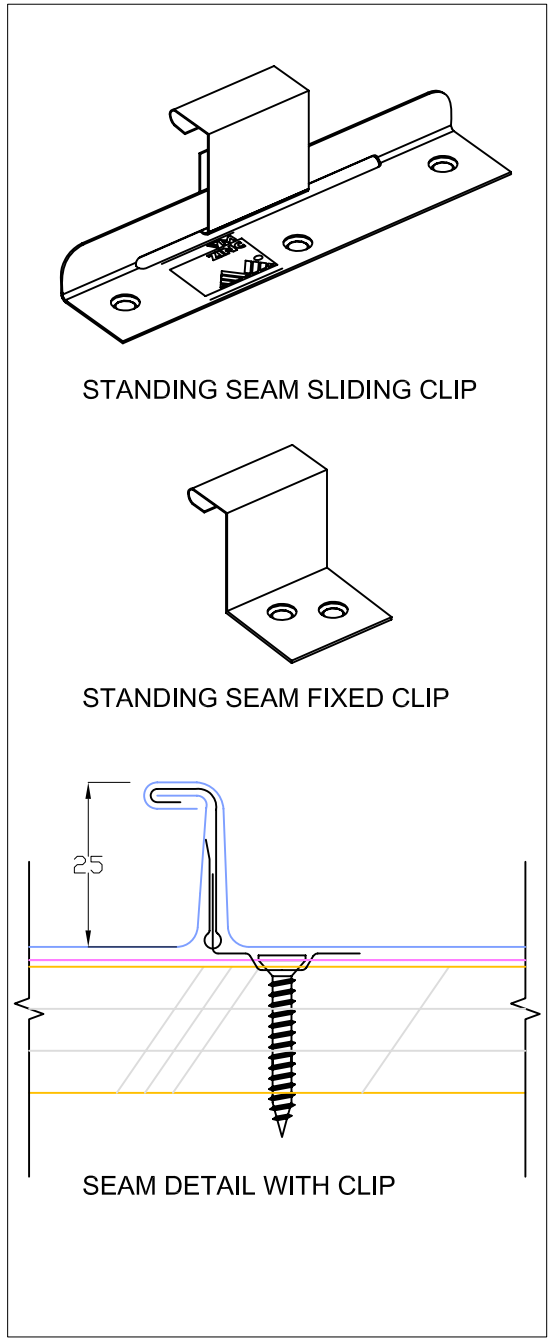
LEGEND:

Umicore Australia - VM ZINC  
Level 3 Unit 9-50 Stanley Street,  
East Sydney 2010 NSW  
[www.vmozinc.com](http://www.vmozinc.com)  
Tel: (61) 02 9358 6100  
Fax: (61) 02 9358 1025

**NOT A SHOP DRAWING:  
FOR ILLUSTRATION ONLY**

While all technical information and suggestions herein are believed to be reliable and accurate, nothing stated herein is to be taken as a warranty, expressed or implied. Responsibility for review and validation remains solely with the design authority or other authority having jurisdiction.

**VMZINC**



TITLE
SLSS - Typical details
System
VM ZINC Single Lock Standing Seam
Scale
N.T.S
LEGEND:

Umicore Australia - VM ZINC  
Level 3 Unit 9-50 Stanley  
Street, East Sydney 2010 NSW

www.vmozinc.com  
Tel: (61) 02 9358 6100  
Fax: (61) 02 9358 1025

NOT A SHOP DRAWING

FOR ILLUSTRATION ONLY

While all technical information and suggestions herein are believed to be reliable and accurate, nothing stated herein is to be taken as a warranty, expressed or implied. Responsibility for review and validation remains solely with the design authority or other authority having jurisdiction.



VM ZINC PARAPET CAPPING

GALVANISED STEEL STIFFENER

50

VM ZINC SINGLE LOCK  
STANDING SEAM

ANTI ABRASIVE BUILDING PAPER

15MM PLYWOOD

20MM VENTILATION CAVITY

PARAPET CAPPING

VM ZINC PARAPET CAPPING

GALVANISED STEEL STIFFENER

VM ZINC SINGLE LOCK  
STANDING SEAM

ANTI ABRASIVE BUILDING PAPER

15MM PLYWOOD

20MM VENTILATION CAVITY

PARAPET WITH SEAM JOINT

NOTE: MAIN STRUCTURE  
AND INSULATION  
BY OTHERS

TITLE

SYSTEM

SCALE

PARAPET OPTIONS

VM ZINC SINGLE LOCK STANDING SEAM

1:5 @ A4

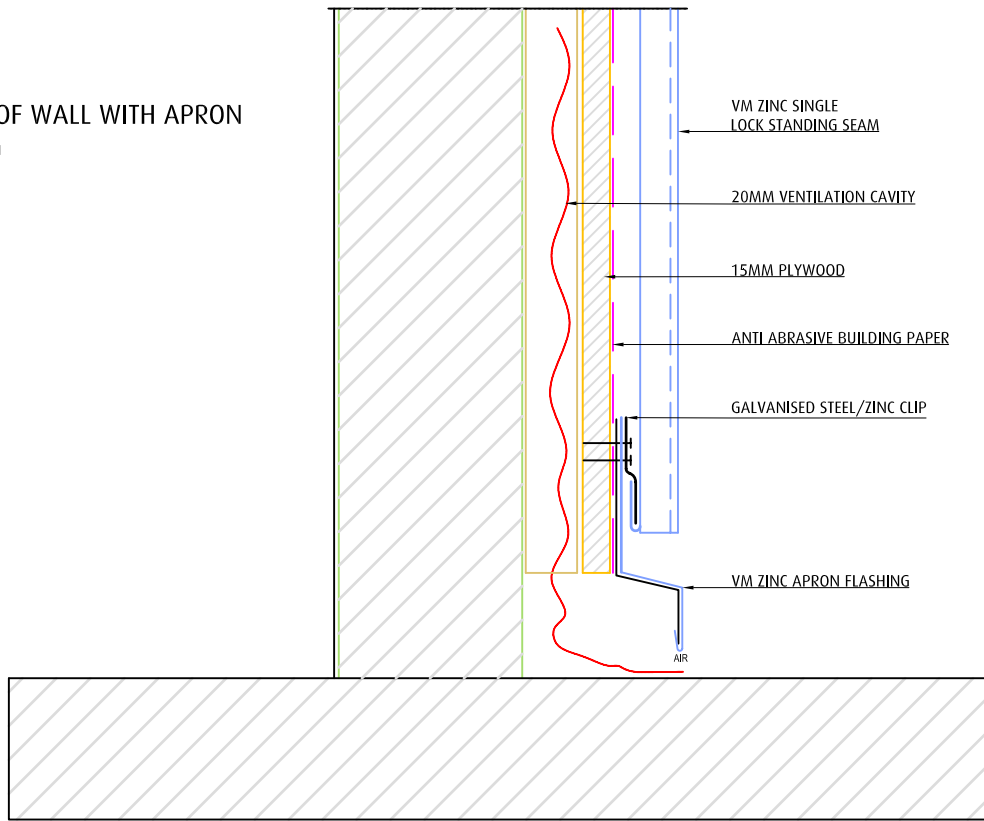
Umicore Australia - VM ZINC  
Level 3 Unit 9-50 Stanley St  
East Sydney 2010 NSW  
[www.vnzinc.com.au](http://www.vnzinc.com.au)  
Tel: (61) 02 9358 6100  
Fax: (61) 02 9358 1025

**NOT A SHOP DRAWING  
FOR ILLUSTRATION ONLY**

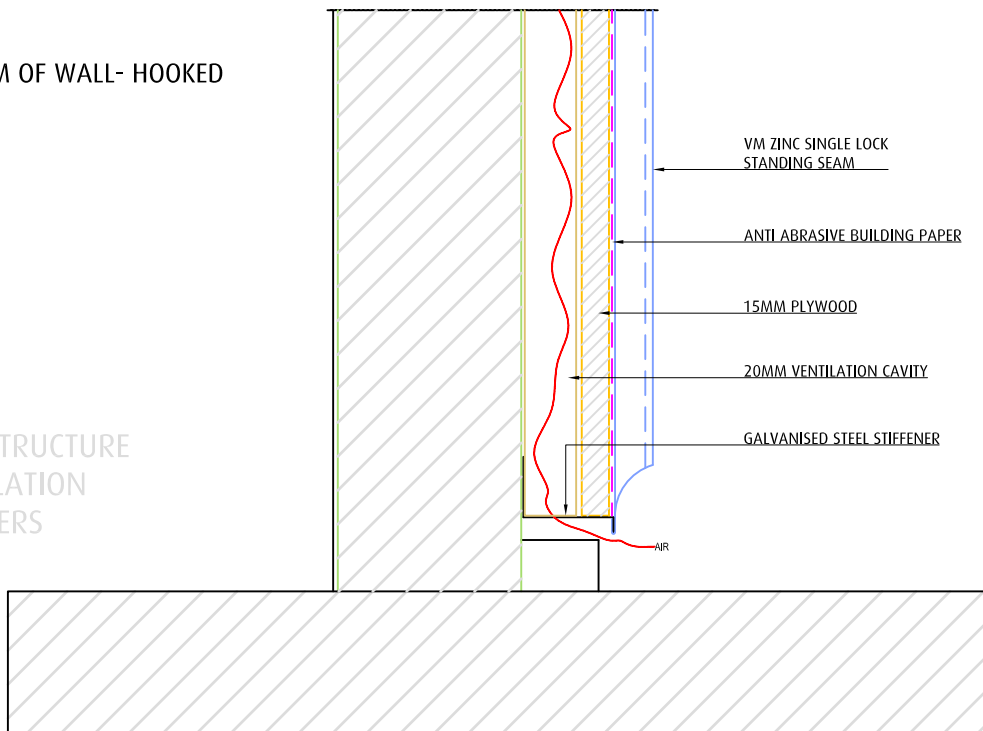
While all technical information and suggestions  
herein are believed to be reliable and accurate,  
nothing stated herein is to be taken as a warranty,  
expressed or implied. Responsibility for review and  
validation remains solely with the design authority  
or other authority having jurisdiction.

**VMZINC**

# BOTTOM OF WALL WITH APRON FLASHING



# BOTTOM OF WALL- HOOKED



NOTE: MAIN STRUCTURE  
AND INSULATION  
BY OTHERS

TITLE

SYSTEM

SCALE

BOTTOM OF WALL

VM ZINC SINGLE LOCK STANDING SEAM

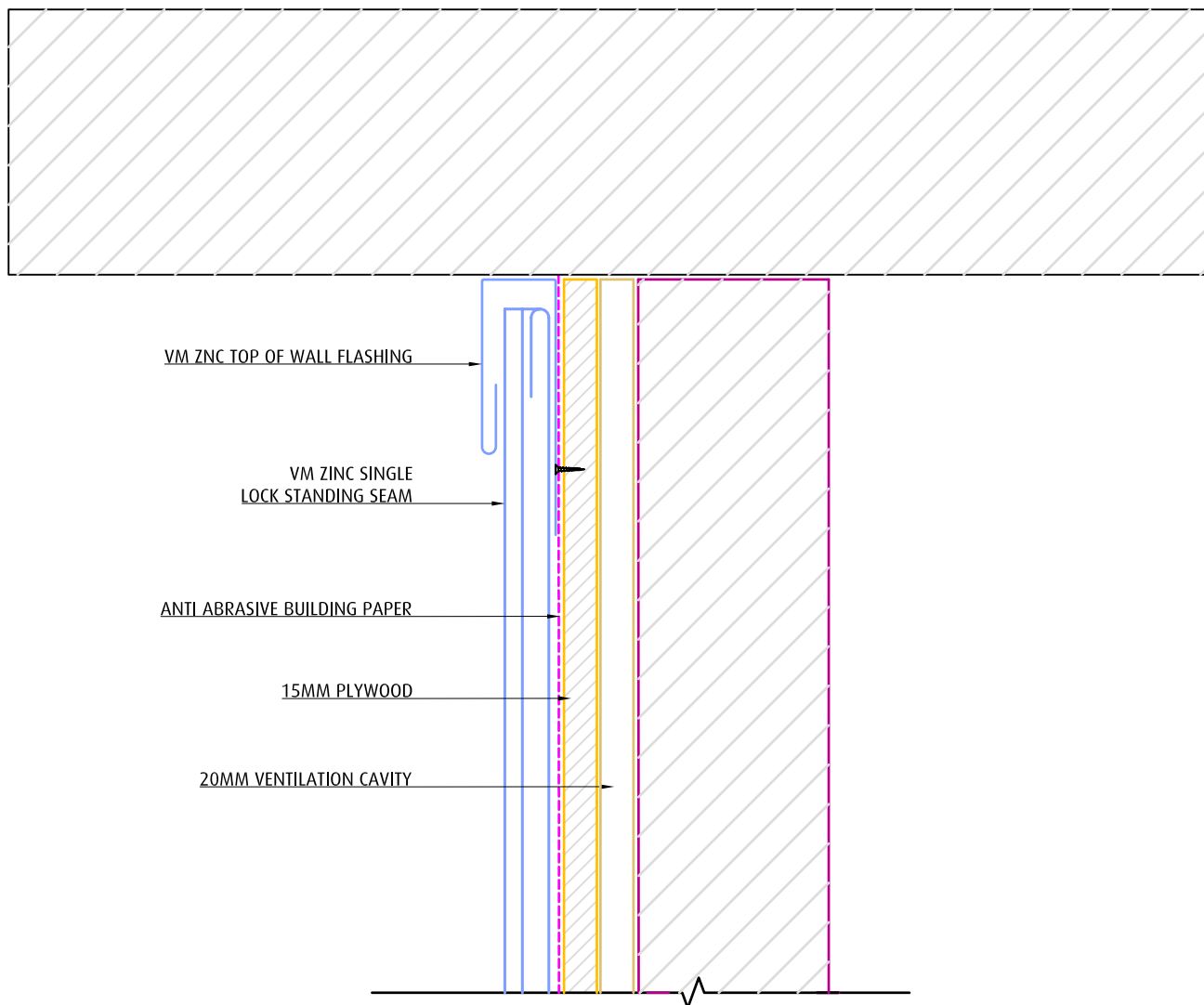
1:5 @ A4

Umicore Australia - VM ZINC  
Level 3 Unit 9-50 Stanley St  
East Sydney 2010 NSW  
[www.v zinc.com.au](http://www.v zinc.com.au)  
Tel: (61) 02 9358 6100  
Fax: (61) 02 9358 1025

## NOT A SHOP DRAWING FOR ILLUSTRATION ONLY

While all technical information and suggestions herein are believed to be reliable and accurate, nothing stated herein is to be taken as a warranty, expressed or implied. Responsibility for review and validation remains solely with the design authority or other authority having jurisdiction.





NOTE: MAIN STRUCTURE  
AND INSULATION  
BY OTHERS

TITLE

SYSTEM

SCALE

TOP OF WALL

VM ZINC SINGLE LOCK STANDING SEAM

1:4 @ A4

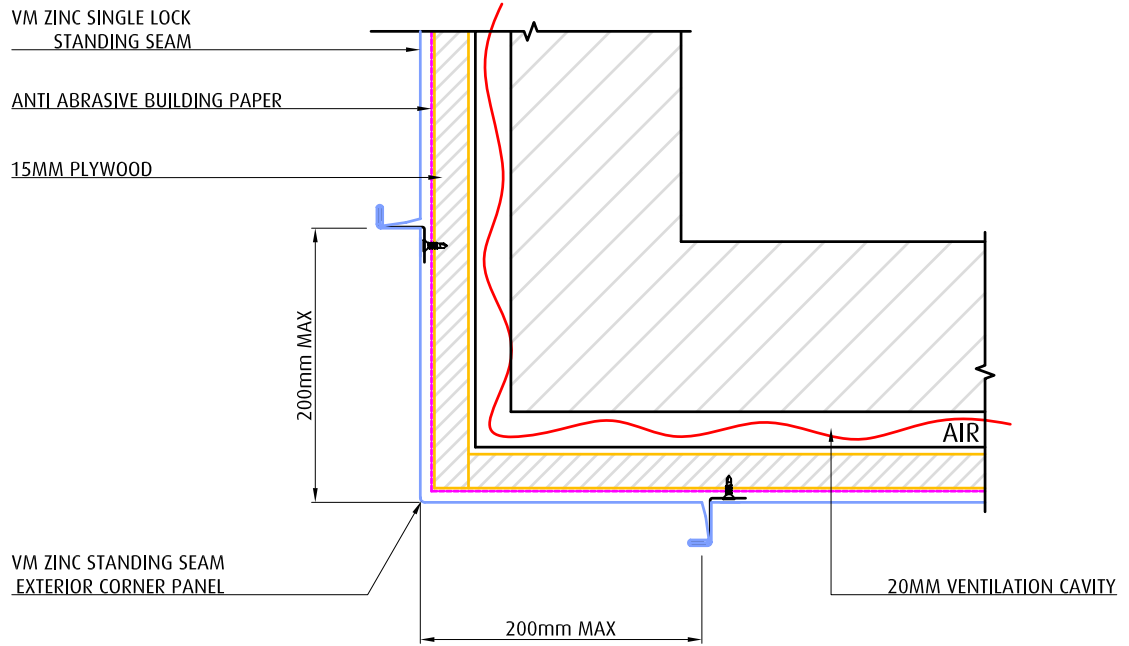
Umicore Australia - VM ZINC  
Level 3 Unit 9-50 Stanley St  
East Sydney 2010 NSW  
[www.vnzinc.com.au](http://www.vnzinc.com.au)  
Tel: (61) 02 9358 6100  
Fax: (61) 02 9358 1025

## NOT A SHOP DRAWING FOR ILLUSTRATION ONLY

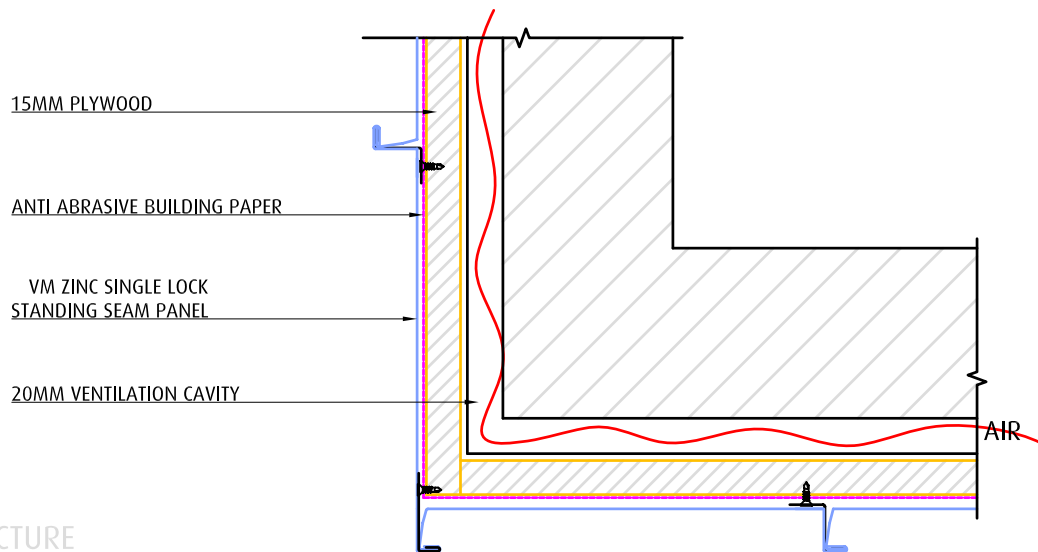
While all technical information and suggestions herein are believed to be reliable and accurate, nothing stated herein is to be taken as a warranty, expressed or implied. Responsibility for review and validation remains solely with the design authority or other authority having jurisdiction.

**VMZINC**

## OPTION 1



## OPTION 2



NOTE: MAIN STRUCTURE  
AND INSULATION  
BY OTHERS

TITLE

SYSTEM

SCALE

EXTERIOR CORNERS

VM ZINC SINGLE LOCK STANDING SEAM

1:4 @ A4

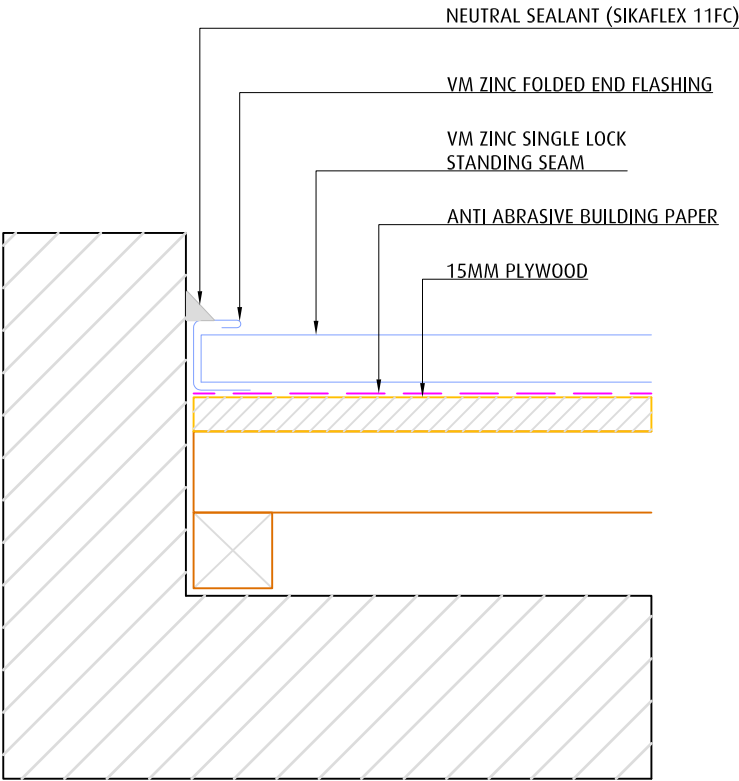
Umicore Australia - VM ZINC  
Level 3 Unit 9-50 Stanley St  
East Sydney 2010 NSW  
[www.vnzinc.com.au](http://www.vnzinc.com.au)  
Tel: (61) 02 9358 6100  
Fax: (61) 02 9358 1025

**NOT A SHOP DRAWING  
FOR ILLUSTRATION ONLY**

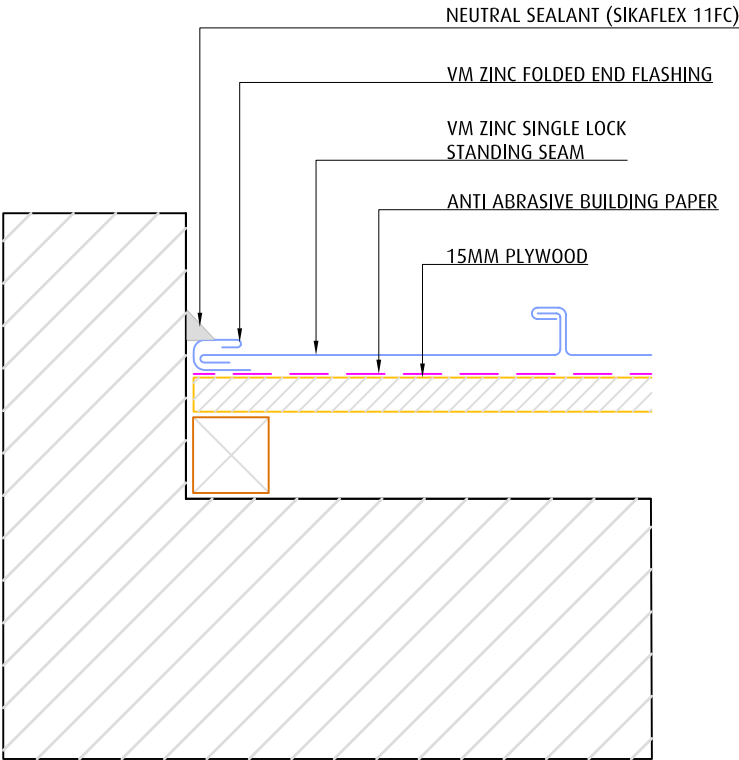
While all technical information and suggestions herein are believed to be reliable and accurate, nothing stated herein is to be taken as a warranty, expressed or implied. Responsibility for review and validation remains solely with the design authority or other authority having jurisdiction.

**VMZINC**


OPTION 1

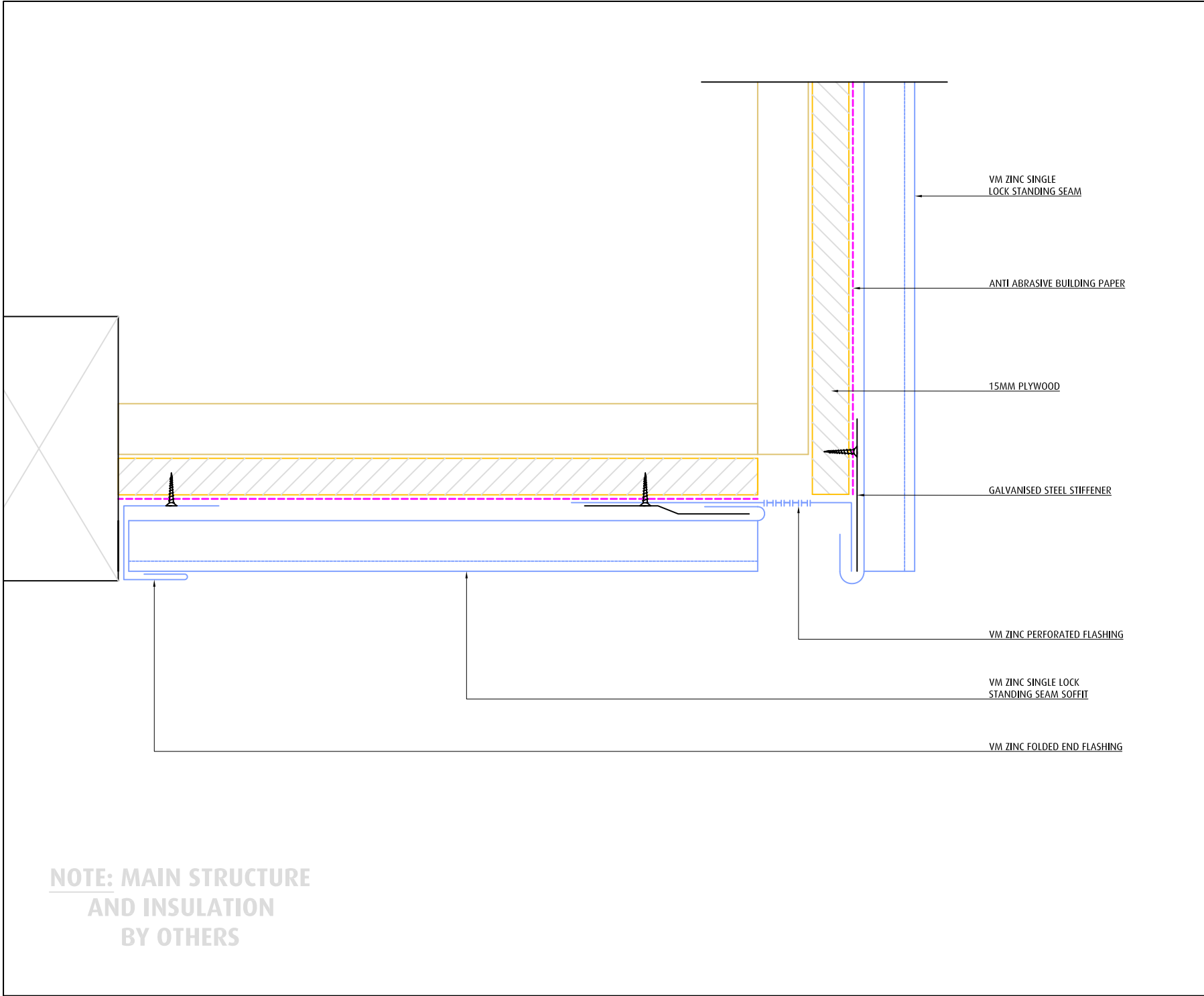


OPTION 2



NOTE: MAIN STRUCTURE  
AND INSULATION  
BY OTHERS

TITLE	SYSTEM	SCALE
WALL JUNCTIONS	VM ZINC SINGLE LOCK STANDING SEAM	1:4 @ A4
	<p>Umicore Australia - VM ZINC Level 3 Unit 9-50 Stanley St East Sydney 2010 NSW <a href="http://www.v zinc.com.au">www.v zinc.com.au</a> Tel: (61) 02 9358 6100 Fax: (61) 02 9358 1025</p> <p><b>NOT A SHOP DRAWING FOR ILLUSTRATION ONLY</b></p> <p>While all technical information and suggestions herein are believed to be reliable and accurate, nothing stated herein is to be taken as a warranty, expressed or implied. Responsibility for review and validation remains solely with the design authority or other authority having jurisdiction.</p>	



TITLE

SOFFIT

System

VM ZINC SINGLE LOCK  
STANDING SEAM

Scale

1:2.5 @ A4

LEGEND:

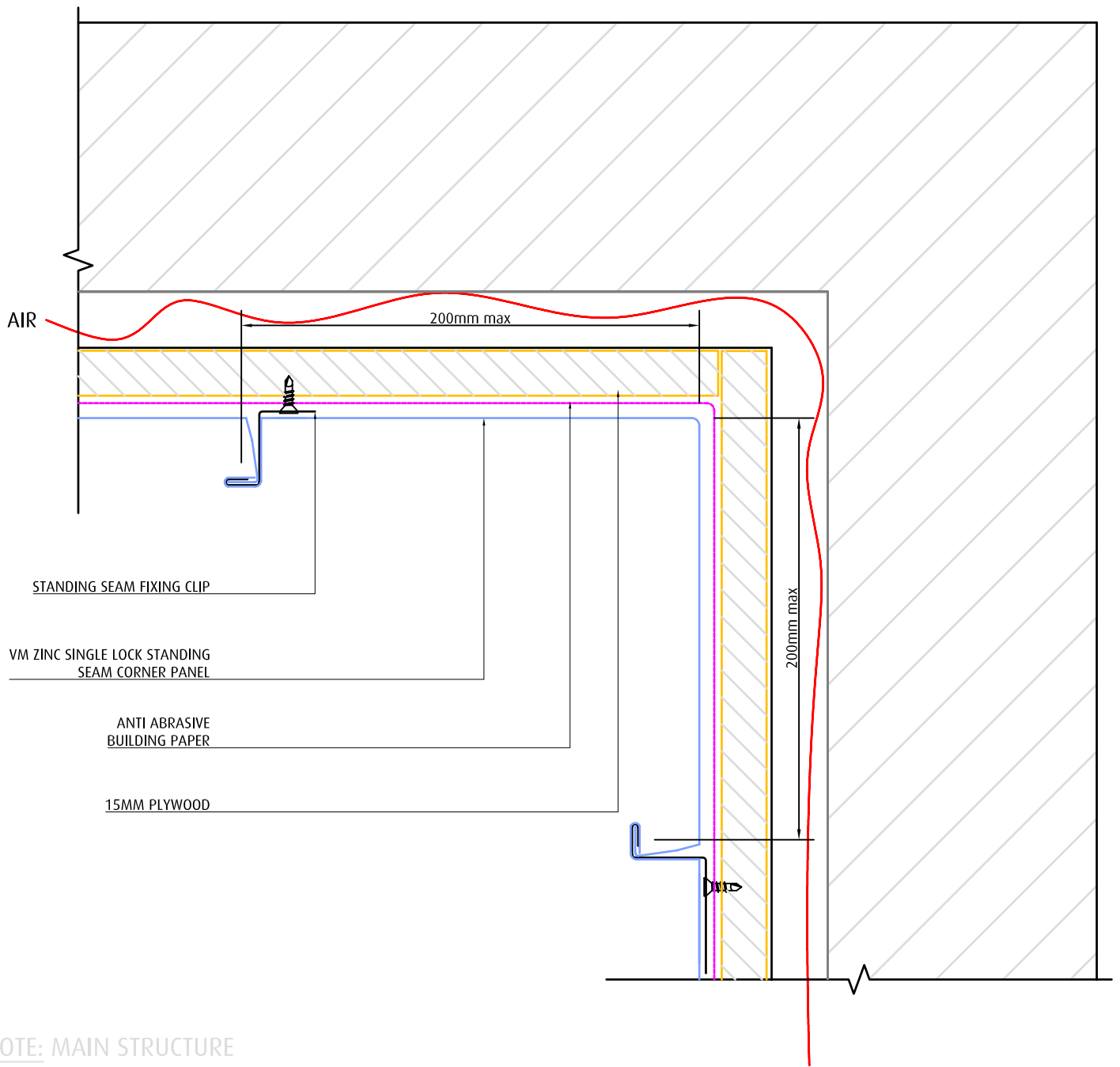
Umicore Australia - VM ZINC  
Level 3 Unit 9-50 Stanley Street,  
East Sydney 2010 NSW  
[www.vmozinc.com](http://www.vmozinc.com)  
Tel: (61) 02 9358 6100  
Fax: (61) 02 9358 1025

**NOT A SHOP DRAWING:  
FOR ILLUSTRATION ONLY**

While all technical information and suggestions herein are believed to be reliable and accurate, nothing stated herein is to be taken as a warranty, expressed or implied. Responsibility for review and validation remains solely with the design authority or other authority having jurisdiction.







TITLE

SYSTEM

SCALE

INTERIOR CORNER

VM ZINC SINGLE LOCK STANDING SEAM

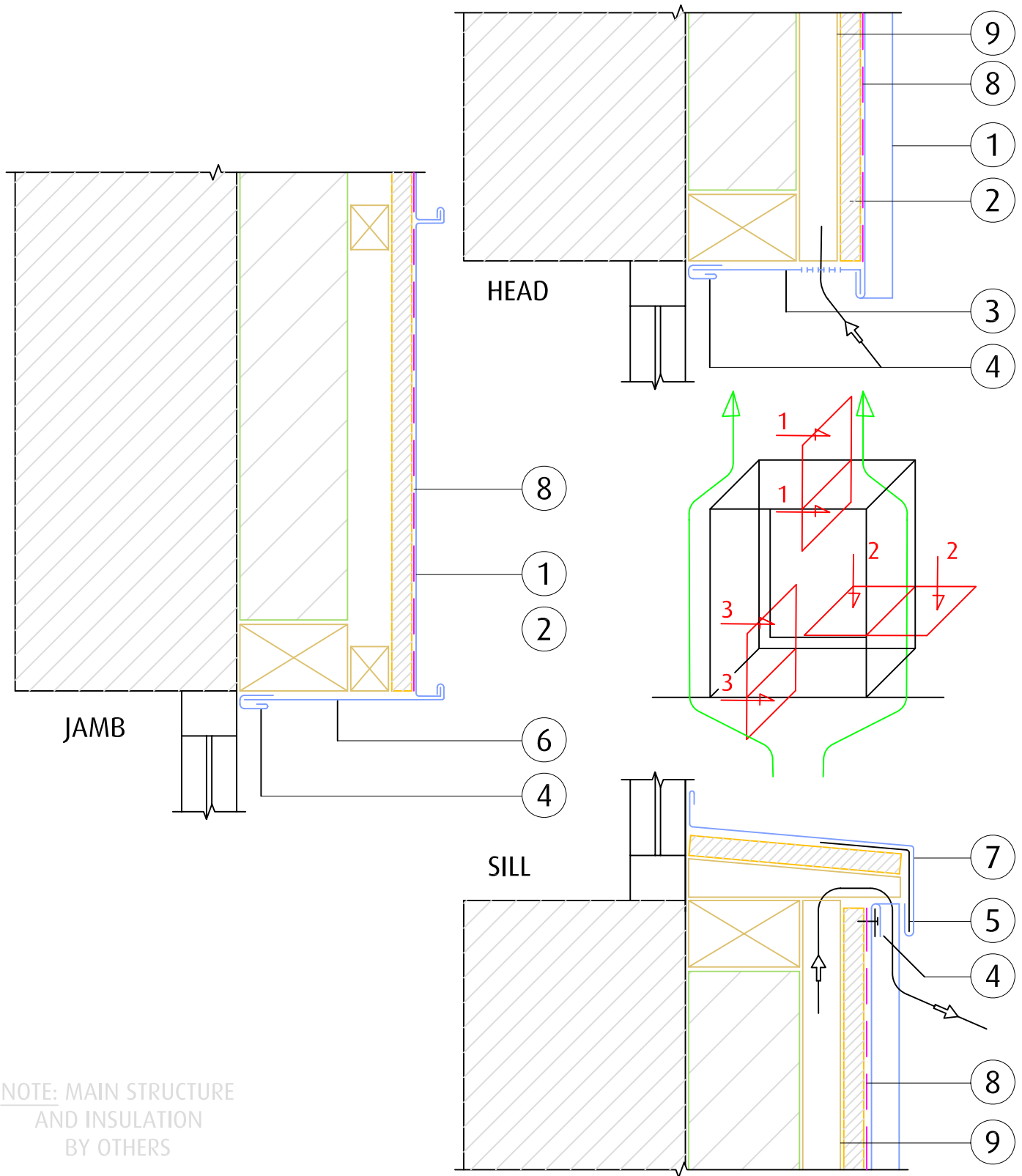
1:2 @ A4

Umicore Australia - VM ZINC  
Level 3 Unit 9-50 Stanley St  
East Sydney 2010 NSW  
[www.vnzinc.com.au](http://www.vnzinc.com.au)  
Tel: (61) 02 9358 6100  
Fax: (61) 02 9358 1025

## NOT A SHOP DRAWING FOR ILLUSTRATION ONLY

While all technical information and suggestions herein are believed to be reliable and accurate, nothing stated herein is to be taken as a warranty, expressed or implied. Responsibility for review and validation remains solely with the design authority or other authority having jurisdiction.





NOTE: MAIN STRUCTURE  
AND INSULATION  
BY OTHERS

TITLE

SYSTEM

SCALE

WINDOW SURROUNDS

VM ZINC SINGLE LOCK STANDING SEAM

1:5 @ A4

1. VM ZINC Single Lock Standing Seam cladding
2. 15mm plywood
3. VM ZINC Window head flashing
4. VM ZINC Securing clip
5. Galvanised steel stiffener
6. VM ZINC Window jamb flashing
7. VM ZINC Window sill flashing
8. Anti abrasive building paper
9. 20mm ventilation cavity

Umicore Australia - VM ZINC  
Level 3 Unit 9-50 Stanley St  
East Sydney 2010 NSW  
www.vmozinc.com.au  
Tel: (61) 02 9358 6100  
Fax: (61) 02 9358 1025

### NOT A SHOP DRAWING FOR ILLUSTRATION ONLY

While all technical information and suggestions herein are believed to be reliable and accurate, nothing stated herein is to be taken as a warranty, expressed or implied. Responsibility for review and validation remains solely with the design authority or other authority having jurisdiction.

**VMZINC**