

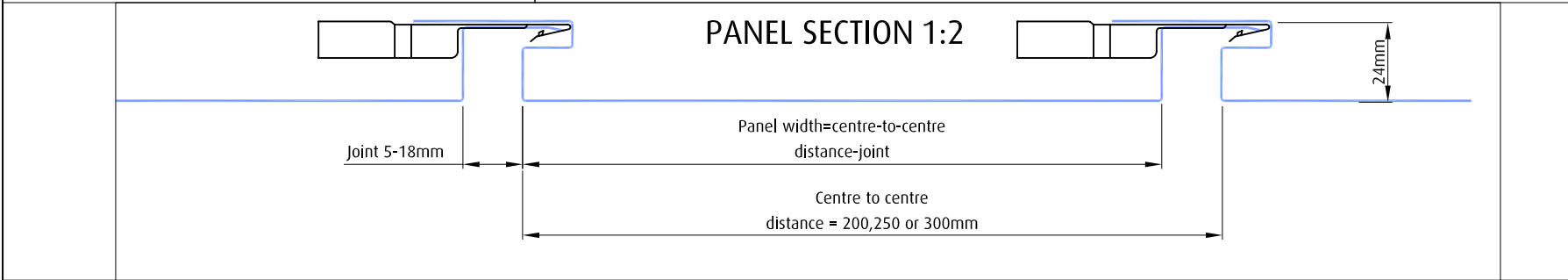
TITLE
TYPICAL DETAILS
System
VM ZINC INTERLOCKING PANEL
Scale
VARIES @ A4
LEGEND:

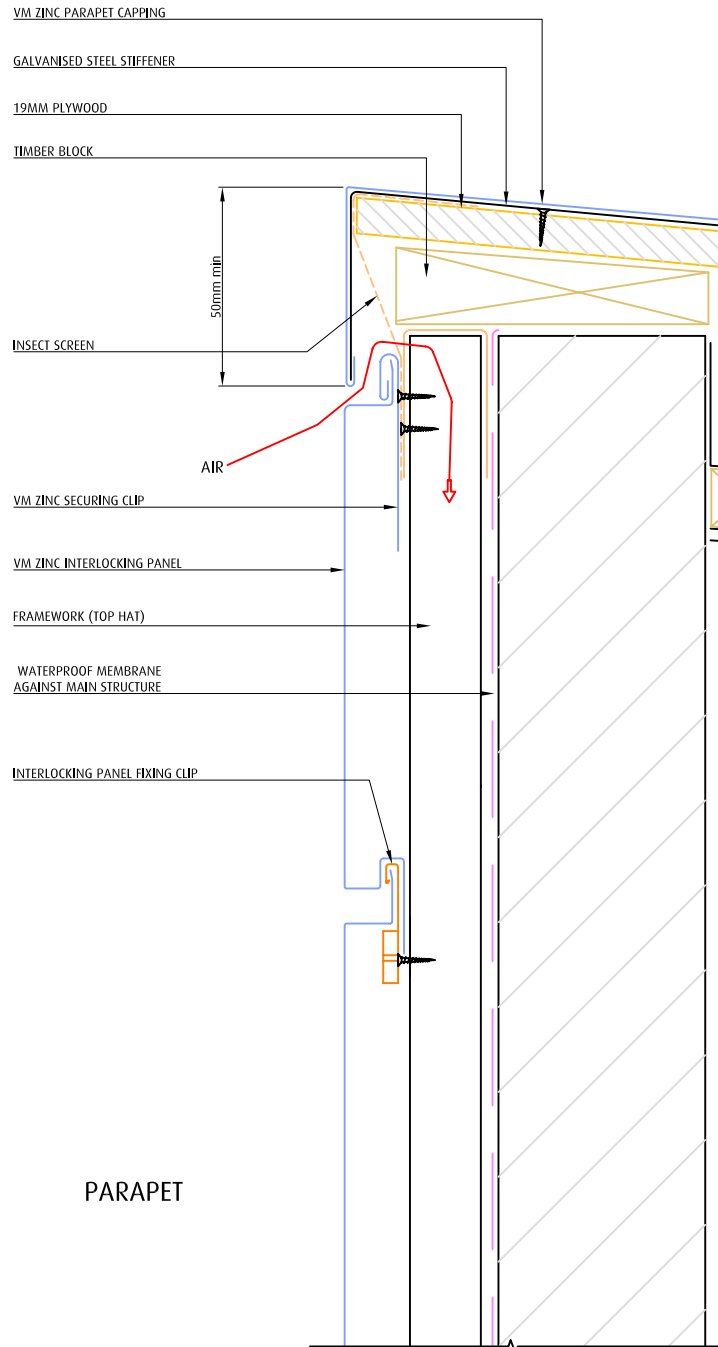
- LEGEND:
1. VM ZINC Interlocking Panel
 2. VM ZINC Interlocking panel clip
 3. Furring Channel
 4. VM ZINC Flat inverted slider
 5. Main Structure(by others)

Umicore Australia - VM ZINC
Level 3 Unit 9-50 Stanley Street,
East Sydney 2010 NSW
www.vmozinc.com
Tel: (61) 02 9358 6100
Fax: (61) 02 9358 1025

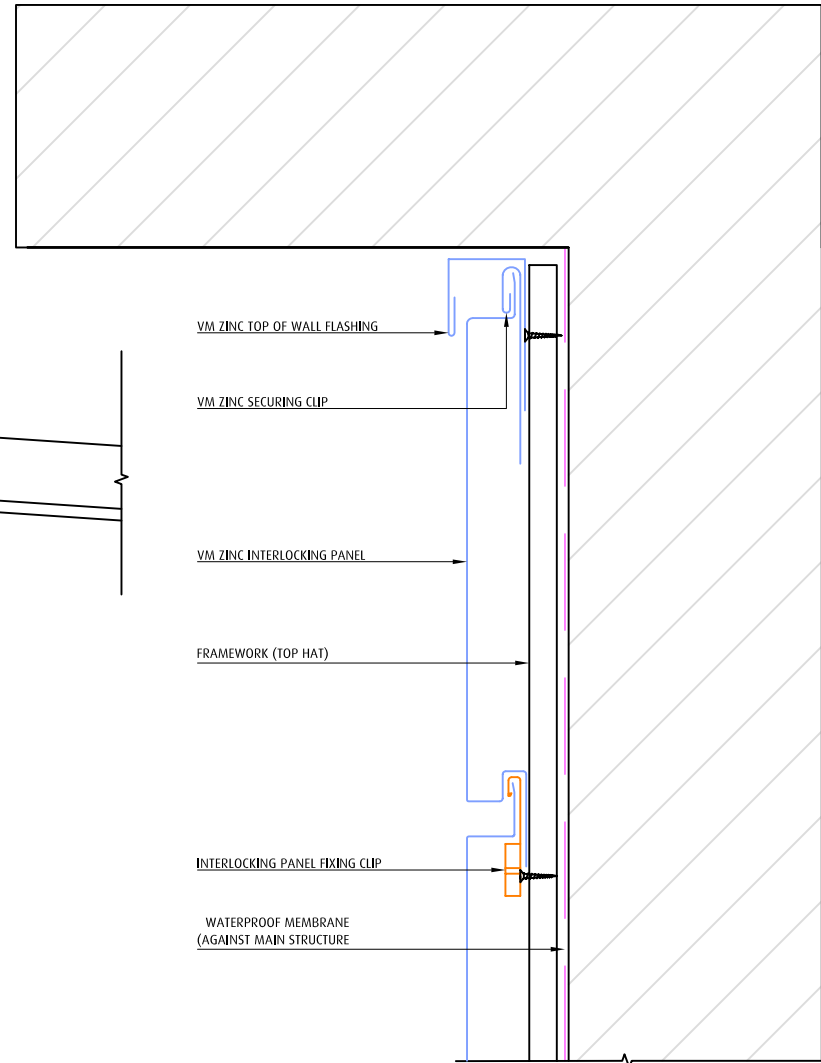
**NOT A SHOP DRAWING:
FOR ILLUSTRATION ONLY**

While all technical information and suggestions herein are believed to be reliable and accurate, nothing stated herein is to be taken as a warranty, expressed or implied. Responsibility for review and validation remains solely with the design authority or other authority having jurisdiction.





PARAPET



TOP OF WALL AT SOFFIT

NOTE: MAIN STRUCTURE
AND INSULATION
BY OTHERS

TITLE

PARAPET

TOP OF WALL

System

VM ZINC INTERLOCKING
PANEL

Scale

1:4 @ A4

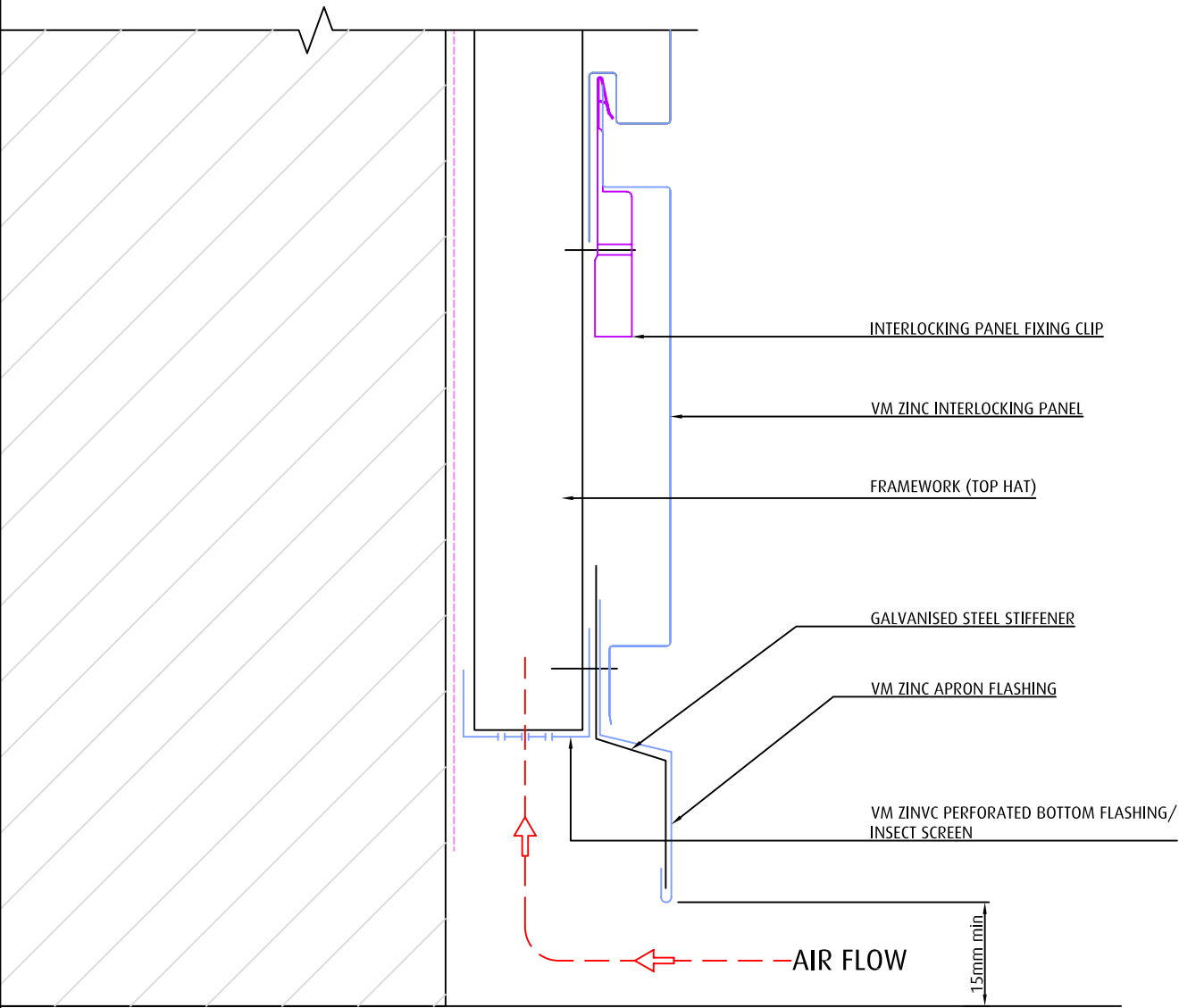
LEGEND:

Umicore Australia - VM ZINC
Level 3 Unit 9-50 Stanley Street,
East Sydney 2010 NSW
www.vnzinc.com
Tel: (61) 02 9358 6100
Fax: (61) 02 9358 1025


**NOT A SHOP DRAWING:
FOR ILLUSTRATION ONLY**

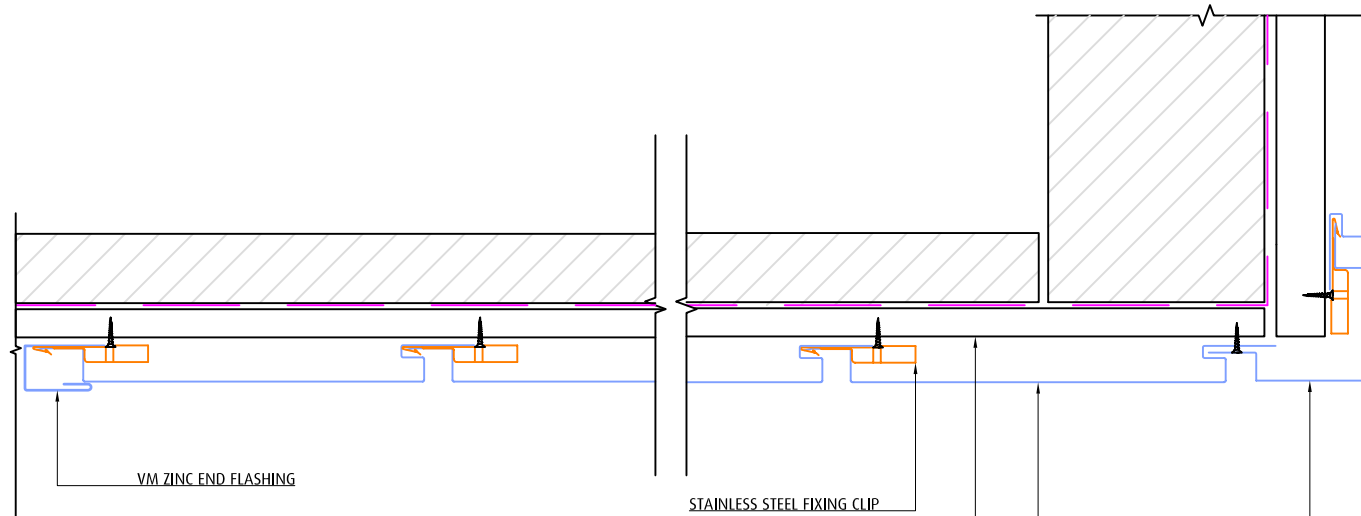
While all technical information and suggestions herein are believed to be reliable and accurate, nothing stated herein is to be taken as a warranty, expressed or implied. Responsibility for review and validation remains solely with the design authority or other authority having jurisdiction.

VMZINC



NOTE: MAIN STRUCTURE
AND INSULATION
BY OTHERS

TITLE	SYSTEM	SCALE
BOTTOM OF WALL	VM ZINC INTERLOCKING PANEL	1:2 @ A4
<div><div><div>Umicore Australia - VM ZINC Level 3 Unit 9-50 Stanley St East Sydney 2010 NSW www.vrmzinc.com.au Tel: (61) 02 9358 6100 Fax: (61) 02 9358 1025</div><div><div>NOT A SHOP DRAWING FOR ILLUSTRATION ONLY</div><div><p>While all technical information and suggestions herein are believed to be reliable and accurate, nothing stated herein is to be taken as a warranty, expressed or implied. Responsibility for review and validation remains solely with the design authority or other authority having jurisdiction.</p></div></div><div></div></div></div>		



OPTION 1

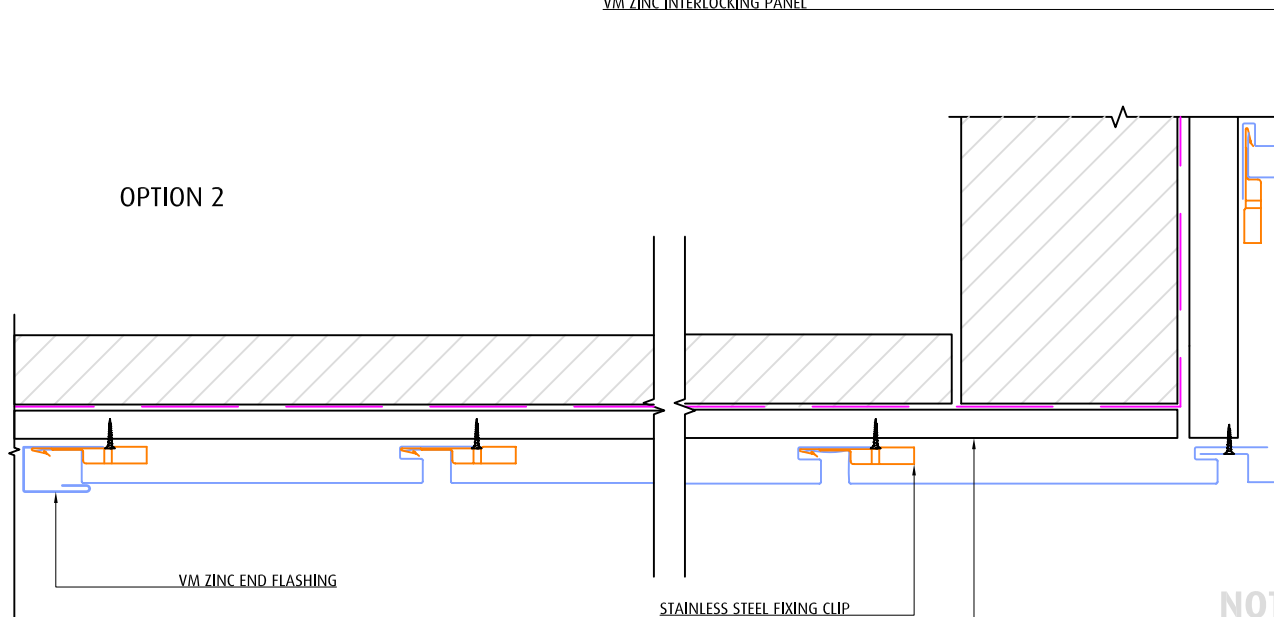
STAINLESS STEEL FIXING CLIP

FRAMEWORK (TOP HAT)

VM ZINC INTERLOCKING PANEL

VM ZINC CORNER FLASHING

VM ZINC INTERLOCKING PANEL



OPTION 2

STAINLESS STEEL FIXING CLIP

FRAMEWORK (TOP HAT)

**NOTE: MAIN STRUCTURE
AND INSULATION
BY OTHERS**

TITLE

SOFFIT

System

VM ZINC INTERLOCKING
PANEL

Scale

1:5 @ A4

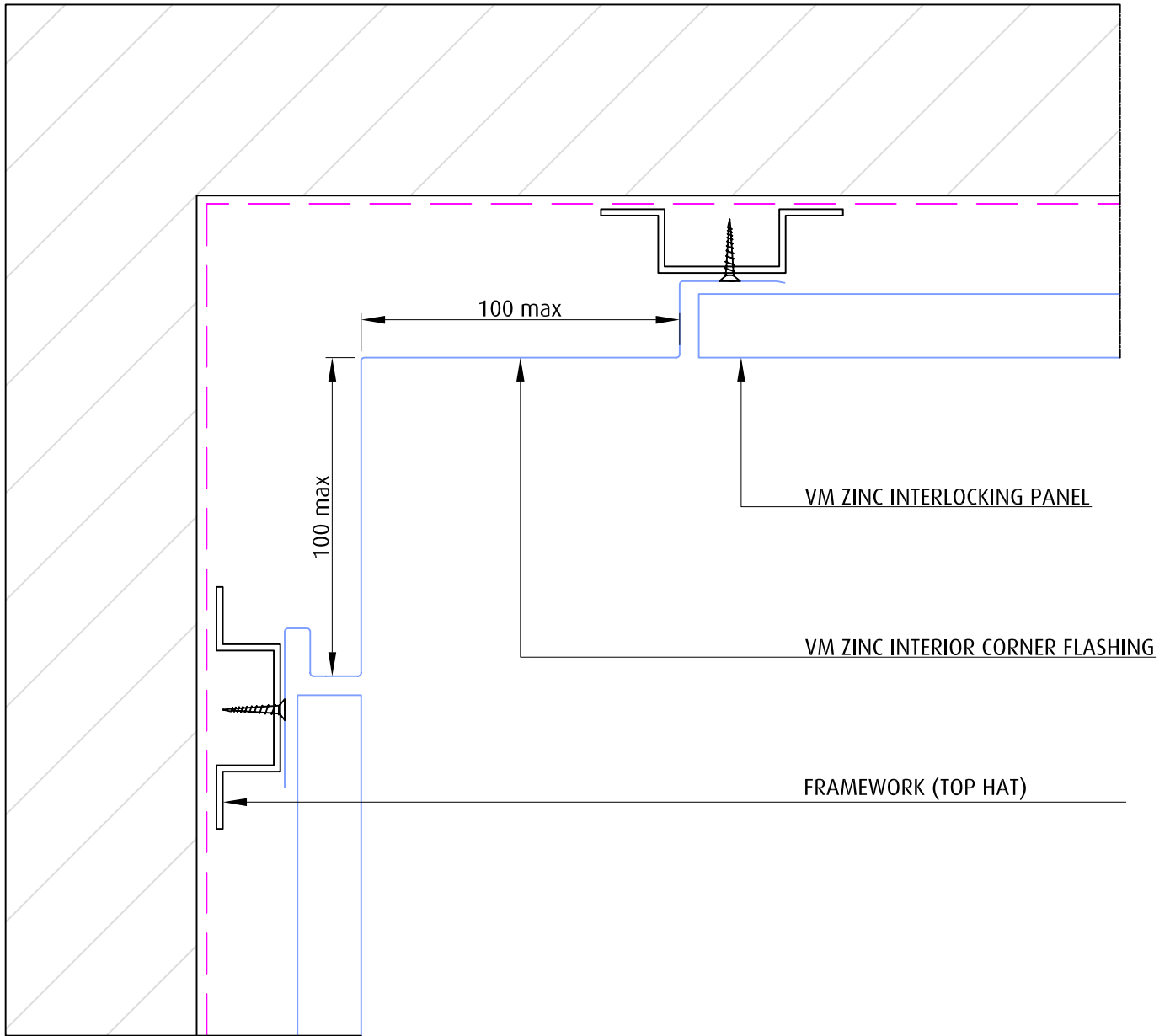
LEGEND:

Umicore Australia - VM ZINC
Level 3 Unit 9-50 Stanley Street,
East Sydney 2010 NSW
www.v zinc.com
Tel: (61) 02 9358 6100
Fax: (61) 02 9358 1025

**NOT A SHOP DRAWING:
FOR ILLUSTRATION ONLY**

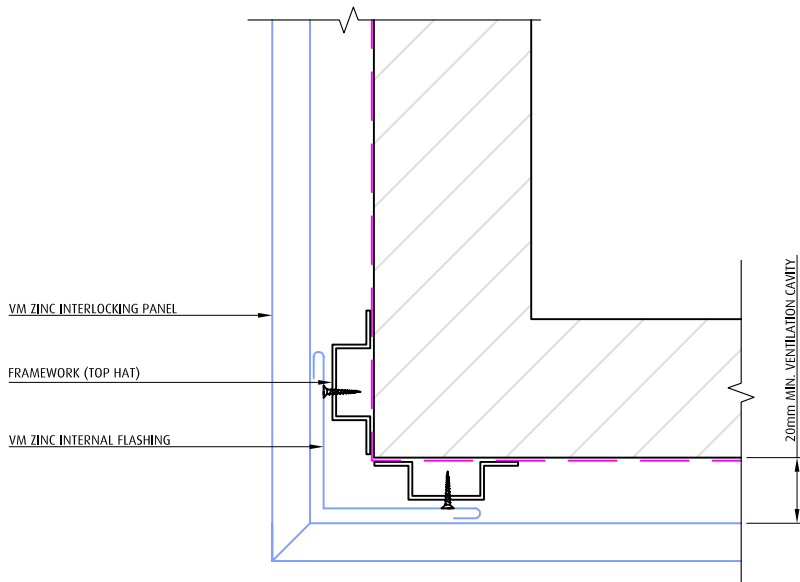
While all technical information and suggestions herein are believed to be reliable and accurate, nothing stated herein is to be taken as a warranty, expressed or implied. Responsibility for review and validation remains solely with the design authority or other authority having jurisdiction.

VMZINC

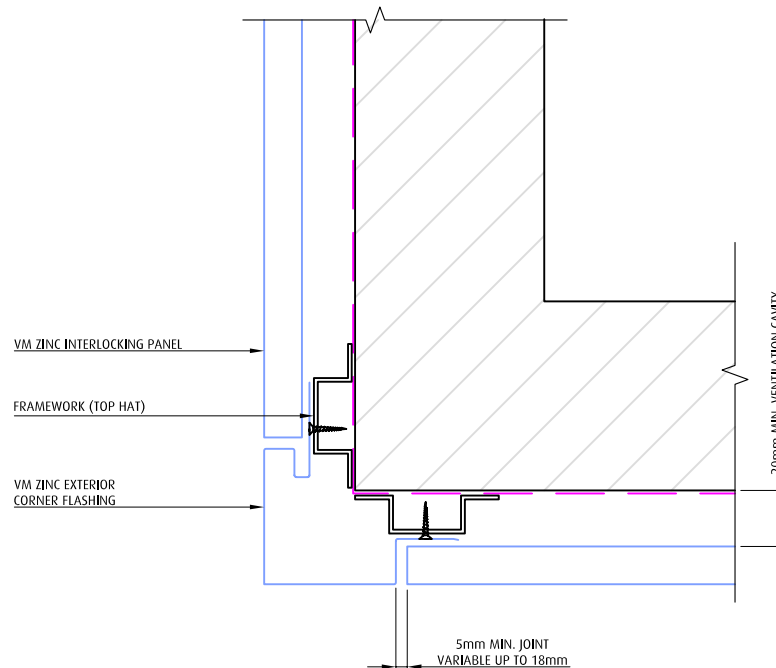


NOTE: MAIN STRUCTURE
AND INSULATION
BY OTHERS

TITLE	SYSTEM	SCALE
INTERIOR CORNER	VM ZINC INTERLOCKING PANEL	1:2 @ A4
<div> <p>Umicore Australia - VM ZINC Level 3 Unit 9-50 Stanley St East Sydney 2010 NSW www.vnzinc.com.au Tel: (61) 02 9358 6100 Fax: (61) 02 9358 1025</p> <p>NOT A SHOP DRAWING FOR ILLUSTRATION ONLY</p> <p>While all technical information and suggestions herein are believed to be reliable and accurate, nothing stated herein is to be taken as a warranty, expressed or implied. Responsibility for review and validation remains solely with the design authority or other authority having jurisdiction.</p> <p>VMZINC</p> </div>		



MITRED CORNER



CORNER FLASHING

**NOTE: MAIN STRUCTURE
AND INSULATION
BY OTHERS**

TITLE

EXTERIOR CORNER

System

VM ZINC INTERLOCKING
PANEL

Scale

1:4 @ A4

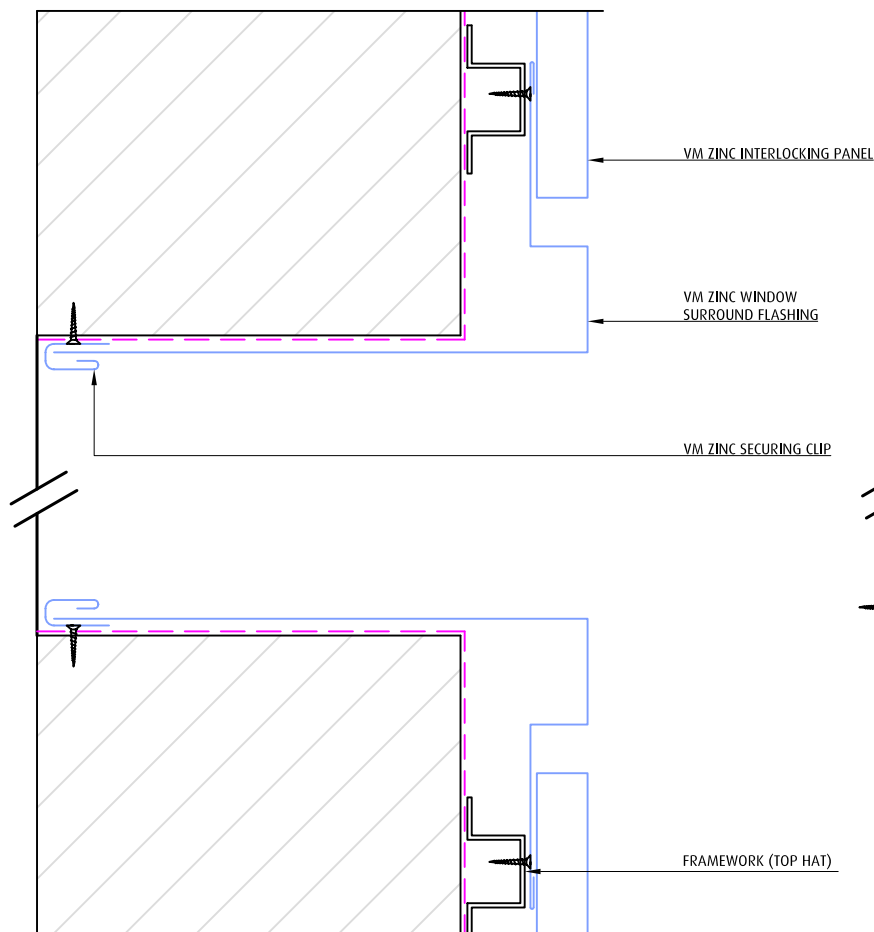
LEGEND:

Umicore Australia - VM ZINC
Level 3 Unit 9-50 Stanley Street,
East Sydney 2010 NSW
www.vmozinc.com
Tel: (61) 02 9358 6100
Fax: (61) 02 9358 1025

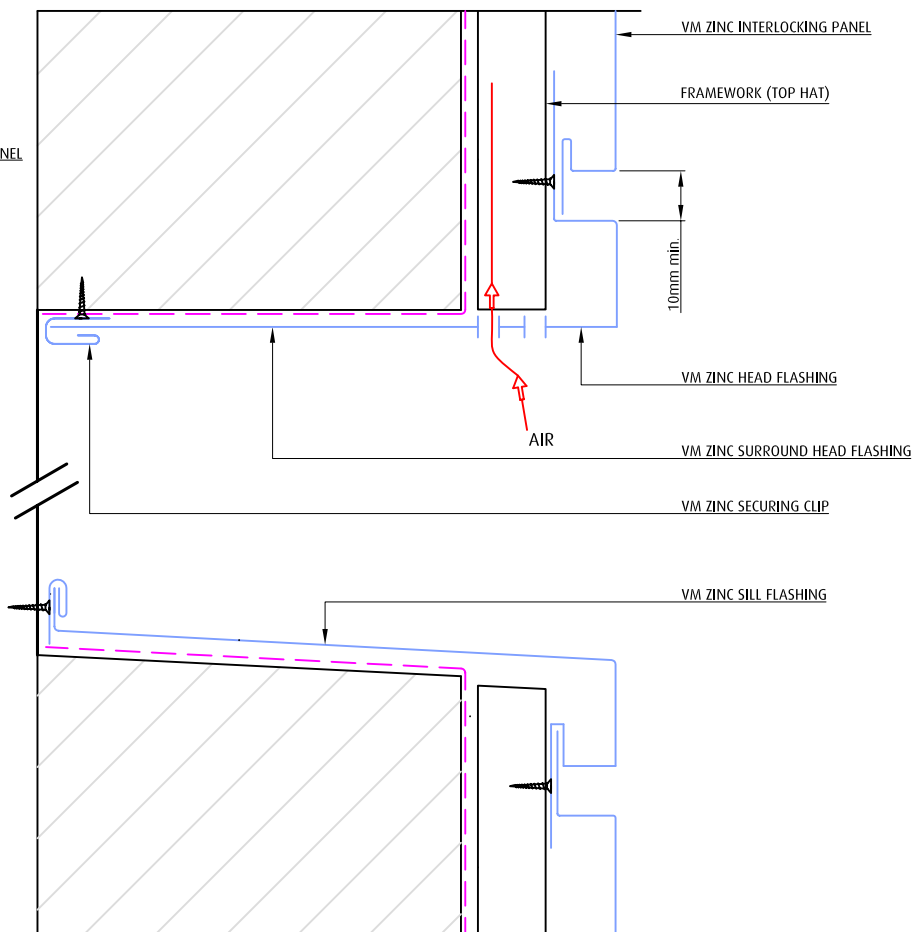
**NOT A SHOP DRAWING:
FOR ILLUSTRATION ONLY**

While all technical information and suggestions herein are believed to be reliable and accurate, nothing stated herein is to be taken as a warranty, expressed or implied. Responsibility for review and validation remains solely with the design authority or other authority having jurisdiction.

VMZINC



WINDOW JAMB



WINDOW HEAD & SILL

**NOTE: MAIN STRUCTURE
AND INSULATION
BY OTHERS**

TITLE

WINDOW SURROUND

System

VM ZINC INTERLOCKING
PANEL

Scale

N.T.S @ A4

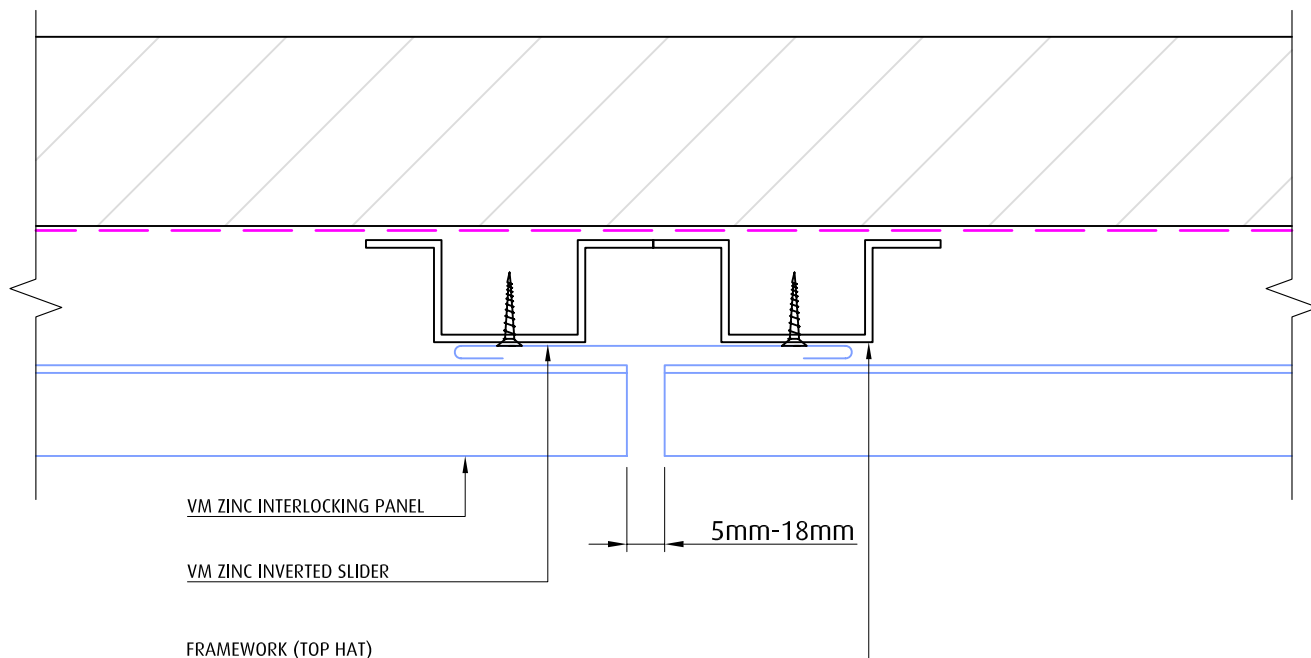
LEGEND:

Umicore Australia - VM ZINC
Level 3 Unit 9-50 Stanley Street,
East Sydney 2010 NSW
www.vnzinc.com
Tel: (61) 02 9358 6100
Fax: (61) 02 9358 1025

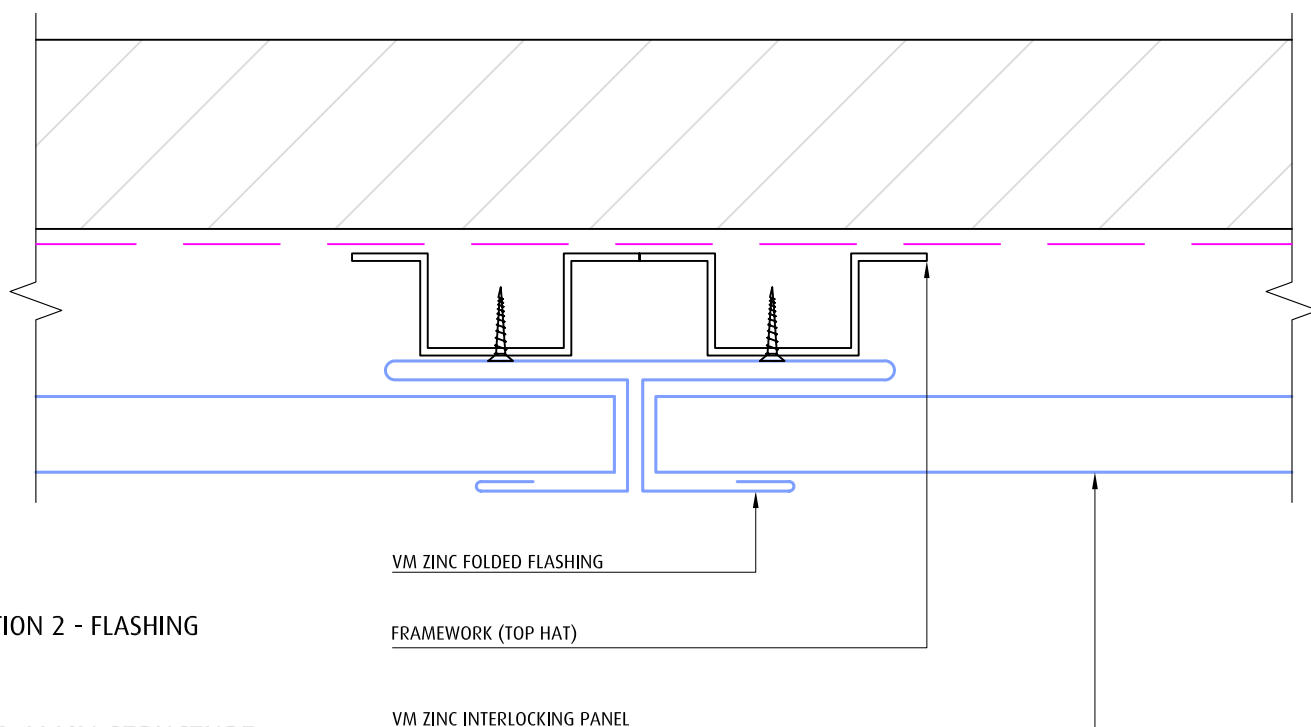
**NOT A SHOP DRAWING:
FOR ILLUSTRATION ONLY**

While all technical information and suggestions herein are believed to be reliable and accurate, nothing stated herein is to be taken as a warranty, expressed or implied. Responsibility for review and validation remains solely with the design authority or other authority having jurisdiction.

VMZINC



OPTION 1 - INVERTED SLIDER



OPTION 2 - FLASHING

NOTE: MAIN STRUCTURE
AND INSULATION
BY OTHERS

TITLE

SYSTEM

SCALE

TRANSVERSAL JUNCTION

VM ZINC INTERLOCKING PANEL

1:2 @ A4

Umicore Australia - VM ZINC
Level 3 Unit 9-50 Stanley St
East Sydney 2010 NSW
www.vnzinc.com.au
Tel: (61) 02 9358 6100
Fax: (61) 02 9358 1025

NOT A SHOP DRAWING FOR ILLUSTRATION ONLY

While all technical information and suggestions herein are believed to be reliable and accurate, nothing stated herein is to be taken as a warranty, expressed or implied. Responsibility for review and validation remains solely with the design authority or other authority having jurisdiction.

VMZINC